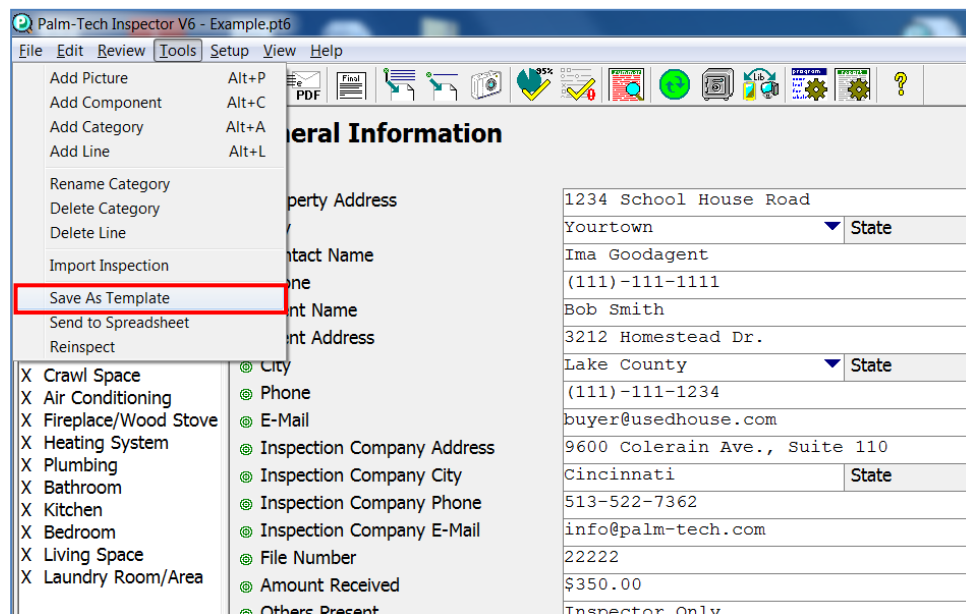


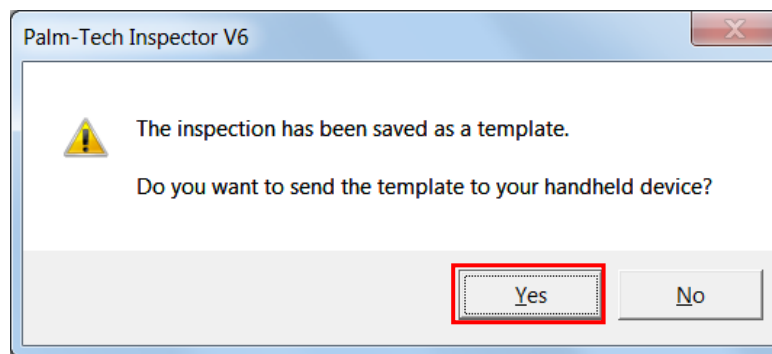
This How To will walk through the process of copying your templates from your desktop or laptop to your handheld device. First, we will explain how to copy over a new template to your handheld device. And then we will explain how to copy all of your templates to your handheld device.

Copying a New Template to Handheld

1. Open the inspection you want to turn into a new template. Then click Tools > Save As Template.



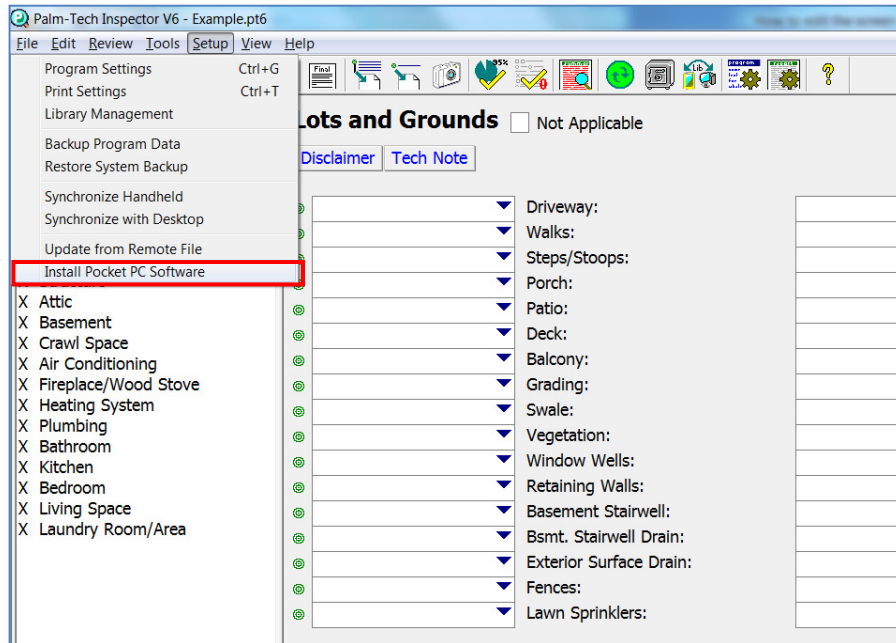
2. After you give your new template a name, Palm-Tech asks if you would like to send it to your handheld. To copy the template to your handheld device, simply click 'Yes'.



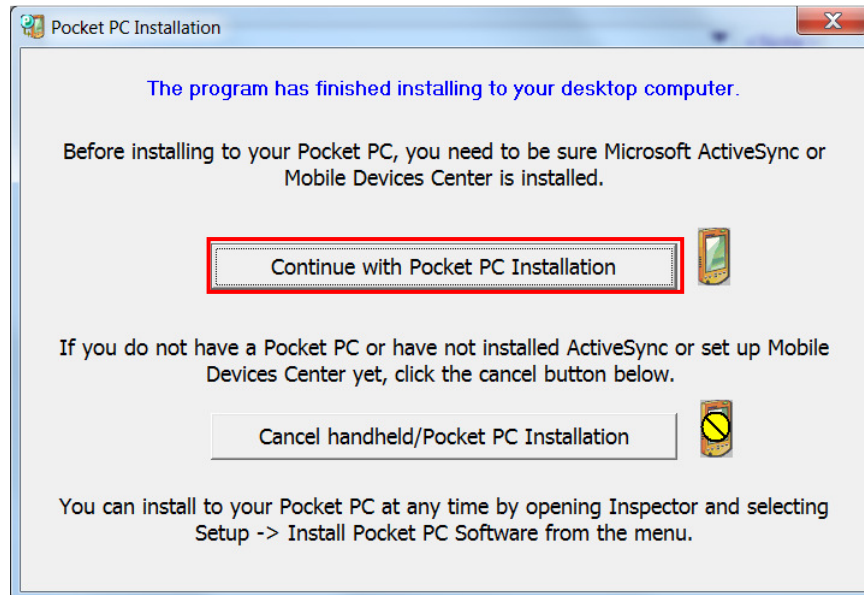
How to: Copy Templates from the Desktop to Handheld

Copying All Templates to Handheld

1. If you are looking to copy all of your templates from your desktop/laptop to your handheld, connect your handheld. Open an inspection and click Setup > Install Pocket PC Software.

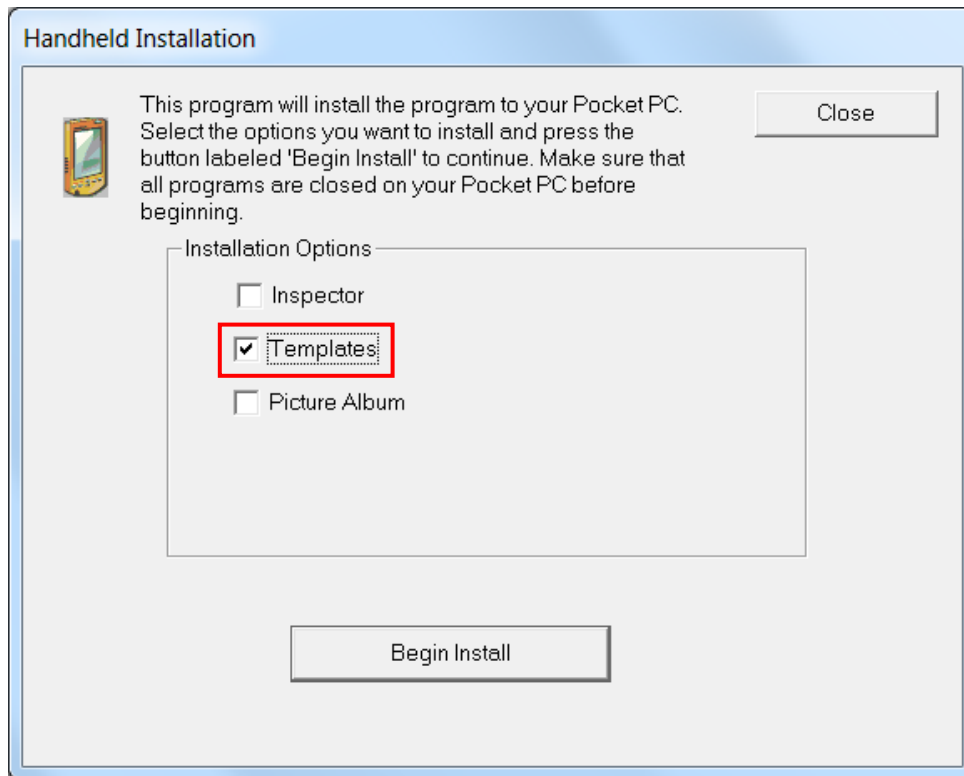


2. On the next screen, click 'Continue with Pocket PC Installation'.



How to: Copy Templates from the Desktop to Handheld

- The next screen shows all of the installation options. Here we are going to **uncheck everything EXCEPT 'Templates'** and click 'Begin Install'.



- Once Palm-Tech is finished installing the templates to your handheld, you will receive a message saying the installation has completed.

