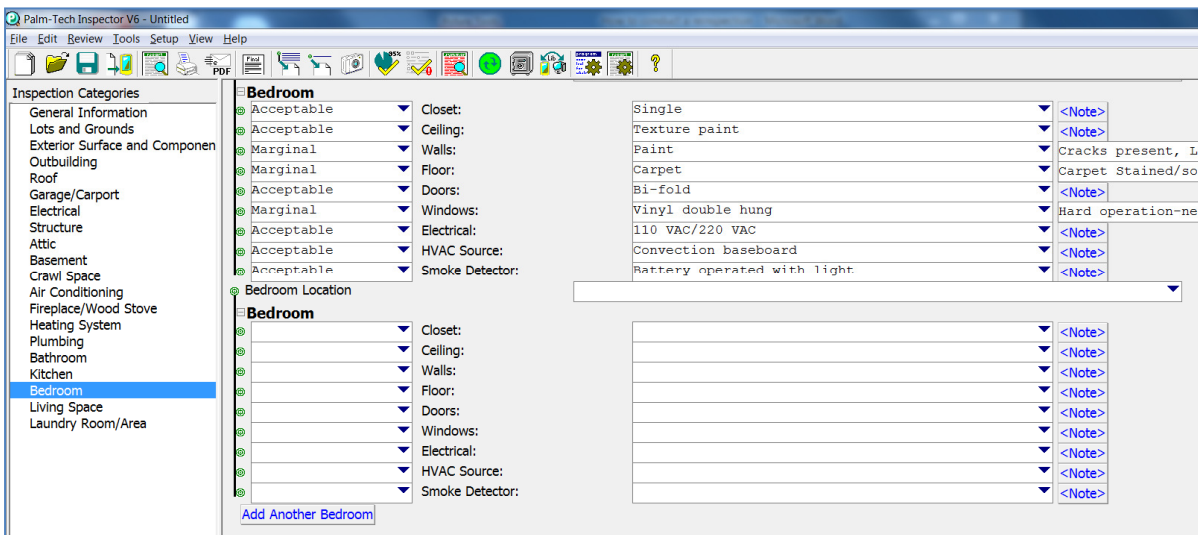


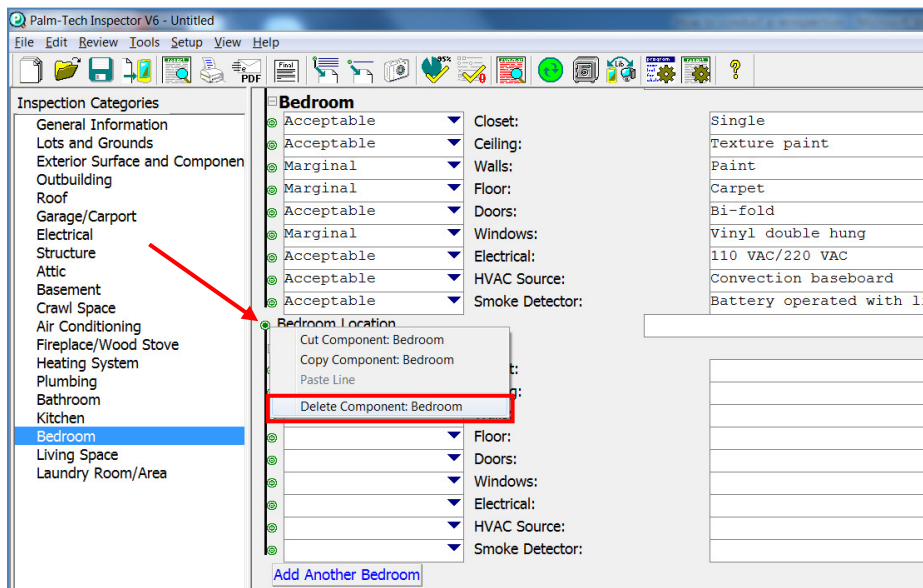
You may come across the need to delete an unused component while completing your inspection report. An example is if you have five bedrooms in your template, but the house you are inspecting only has four bedrooms. With Palm-Tech you are able to easily delete the fifth, unused bedroom.

## Deleting a Component from Inspector on a Desktop

1. With your inspection open, go the category with the extra component that you want to delete.



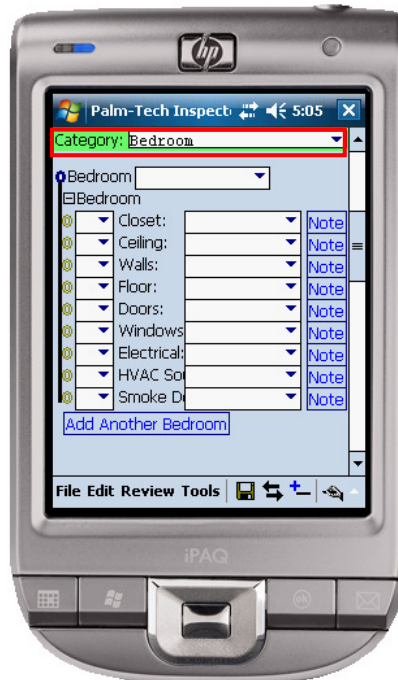
2. Find the component that you want to delete. Right click on the small green circle next to the location line and click 'Delete Component'.



# How to: Delete a Component in Inspector

## Deleting a Component from Inspector on a Handheld

1. With your inspection open, go the category with the extra component that you want to delete.



2. Find the component that you want to delete. Hold your stylus down on the small circle next to the location line and tap 'Delete Component'.

