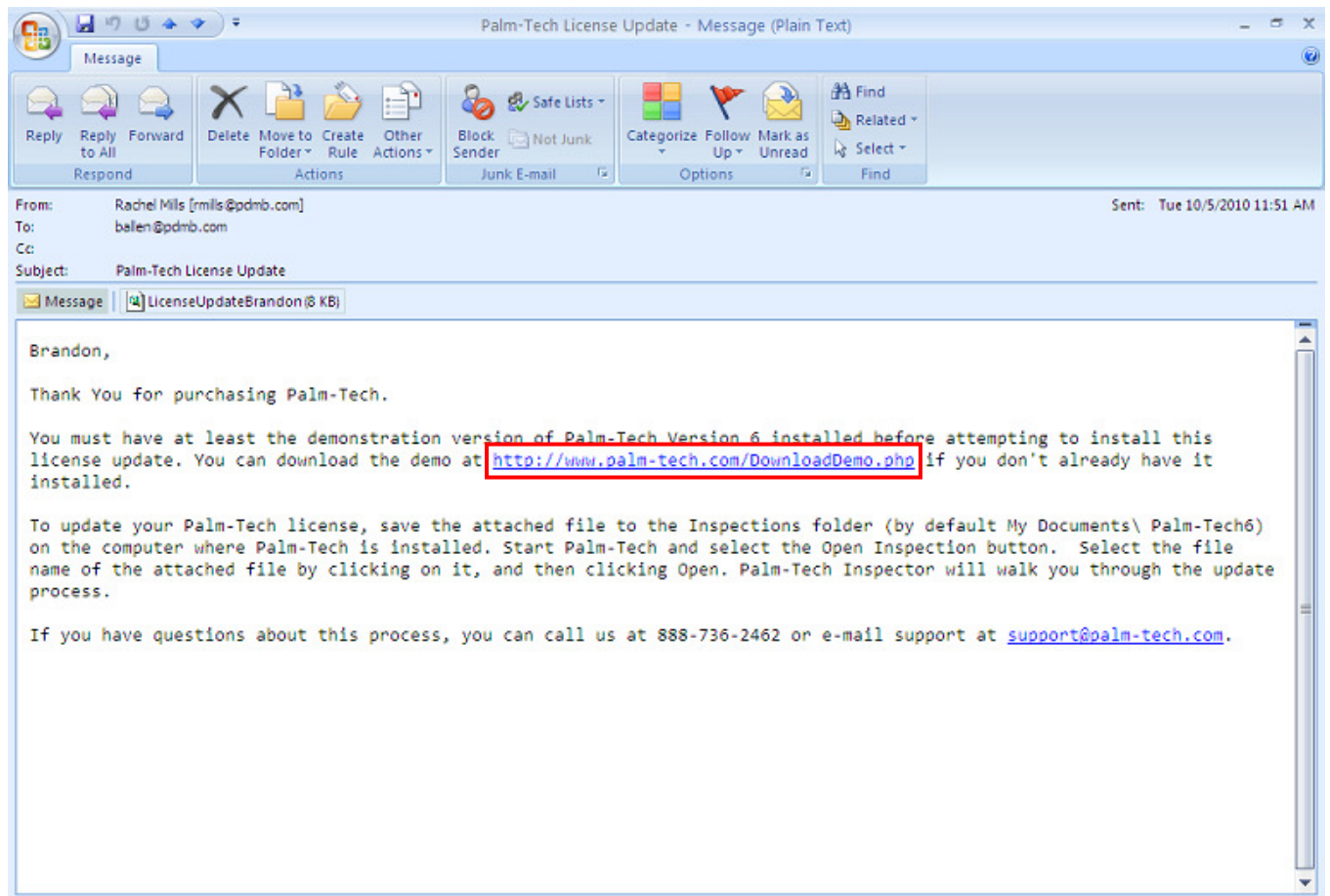


Tablet PC's are becoming more and more popular among home inspectors. This How To is a step-by-step guide to installing Palm-Tech on to a Tablet PC without a disk drive. There are three ways we are going to discuss that you can choose to install Palm-Tech.

Installing from Email

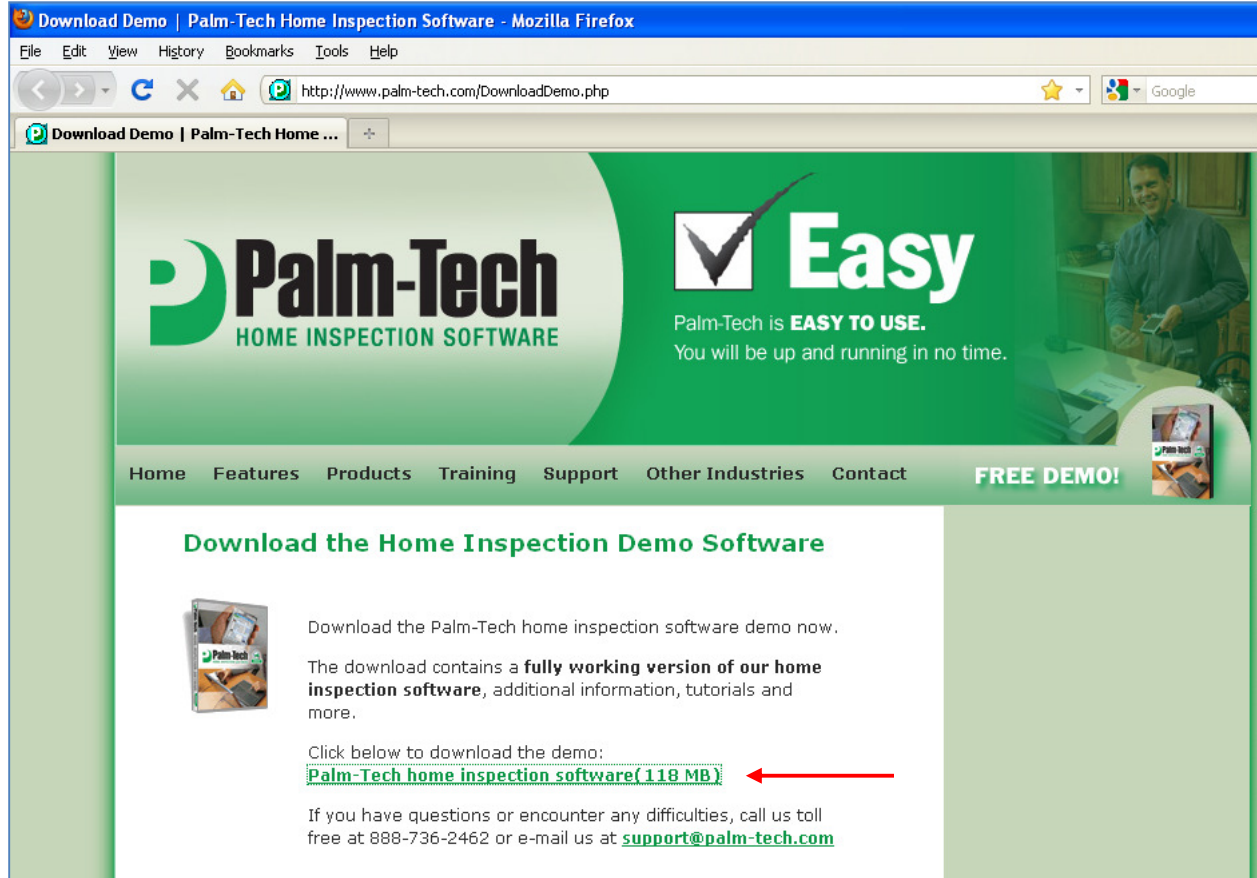
This is the easiest way to install, but you must have an internet connection on your tablet.

1. If you have internet access on your tablet, simply open up the email you received from Palm-Tech and follow the instructions to download the demo on to your tablet.

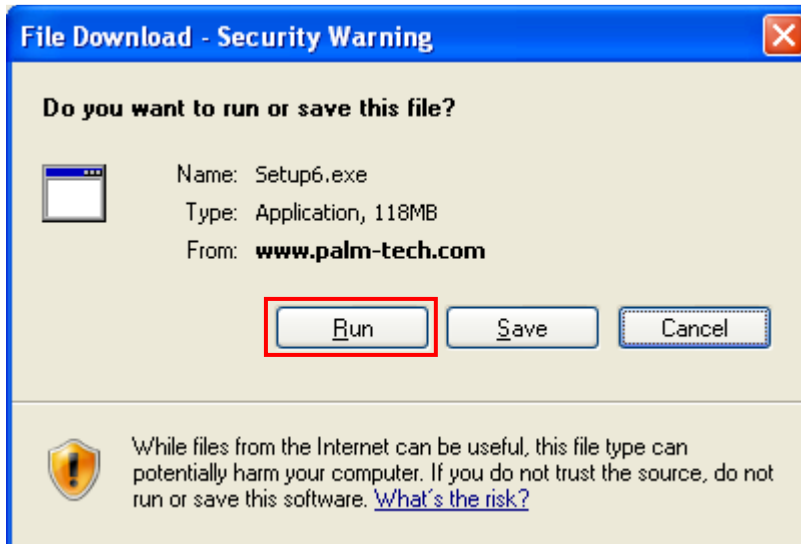


How to: Install Palm-Tech on a Tablet PC

2. Download the demo version of the software from the link provided in the email.

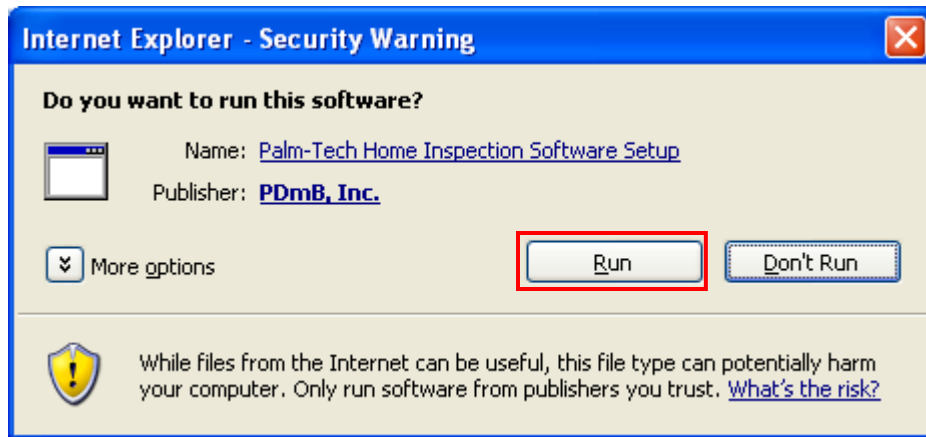


3. Download the software by clicking Run.

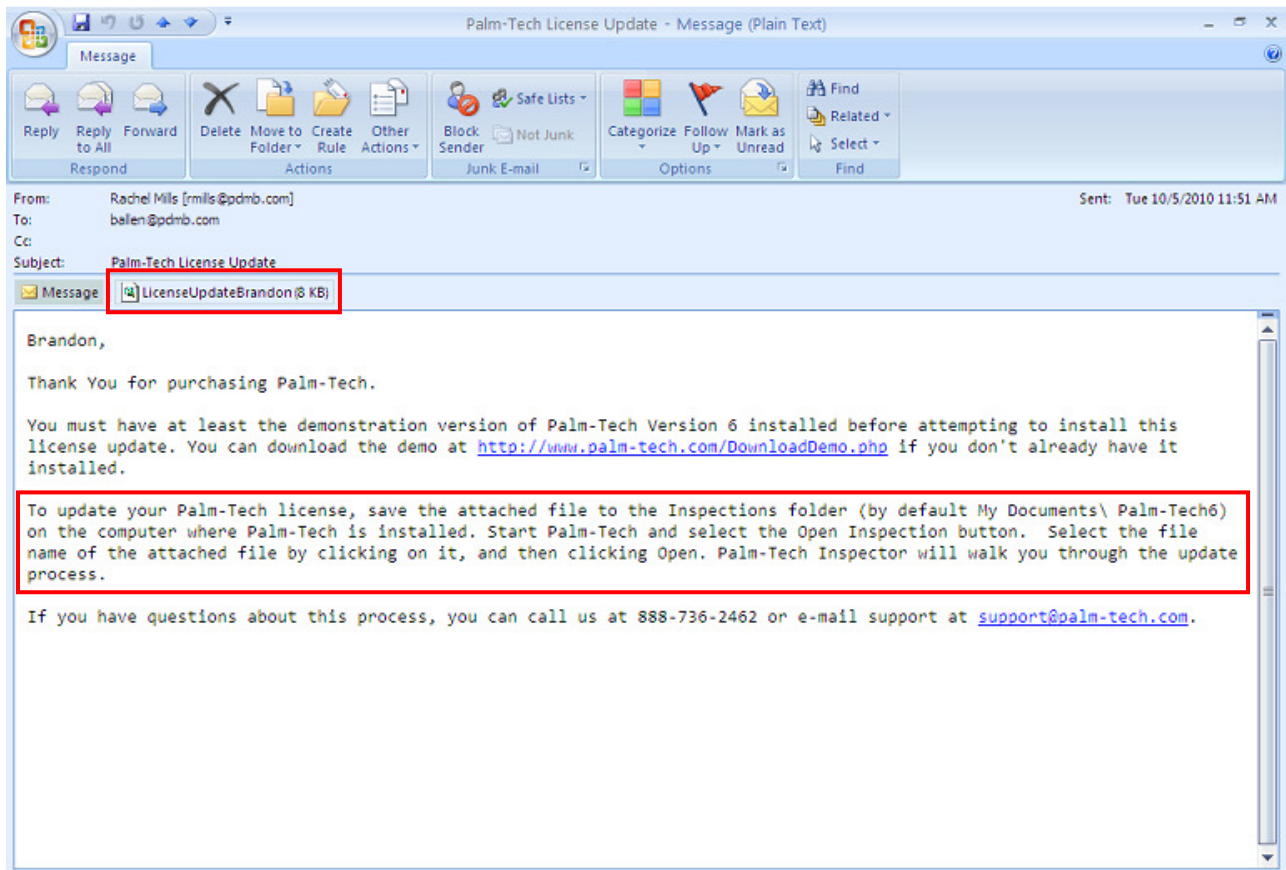


How to: Install Palm-Tech on a Tablet PC

- Now that the software is downloaded, you'll need to run it.



- When you are finished downloading and running Palm-Tech, you will need to run your license update. Follow the instructions in the same email. If you are having difficulty, please see the How To on updating your license here: http://www.palm-tech.com/support/howto/001_How%20to%20Run%20a%20License%20Update.pdf

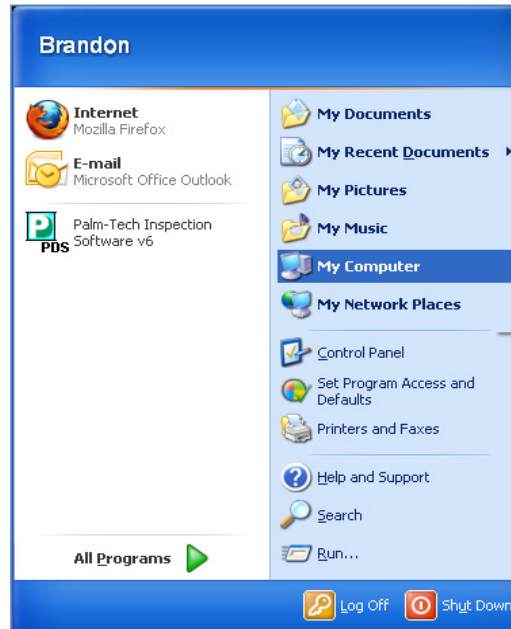


How to: Install Palm-Tech on a Tablet PC

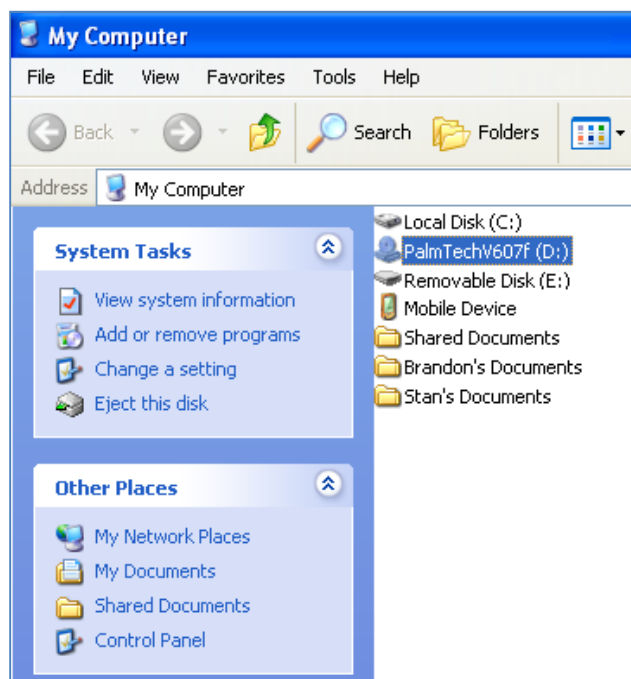
If you do not have internet access on your tablet, you will need to choose one of the next two options in order to install Palm-Tech.

Copying Files from the CD to a Flash Drive

1. Insert your Palm-Tech CD into either a laptop or desktop computer. Click on 'Start' and navigate to 'My Computer' (or on Vista or Windows 7 'Computer').

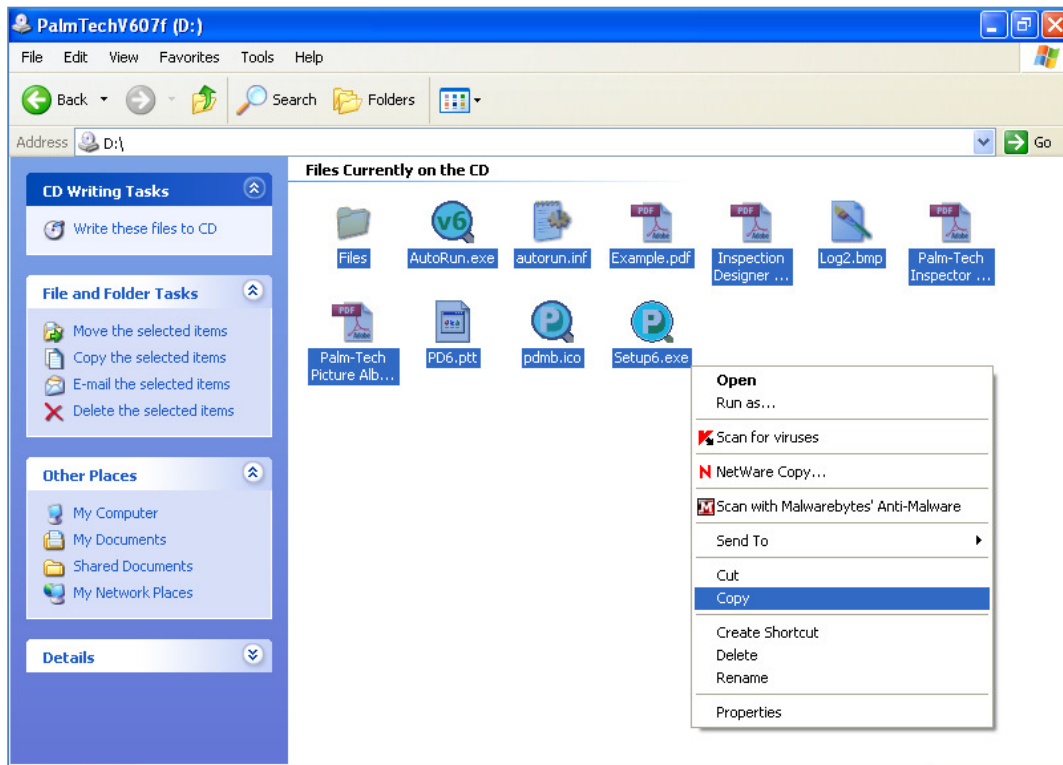


2. Navigate to your CD Drive (NOTE: It may not be drive D on your PC).

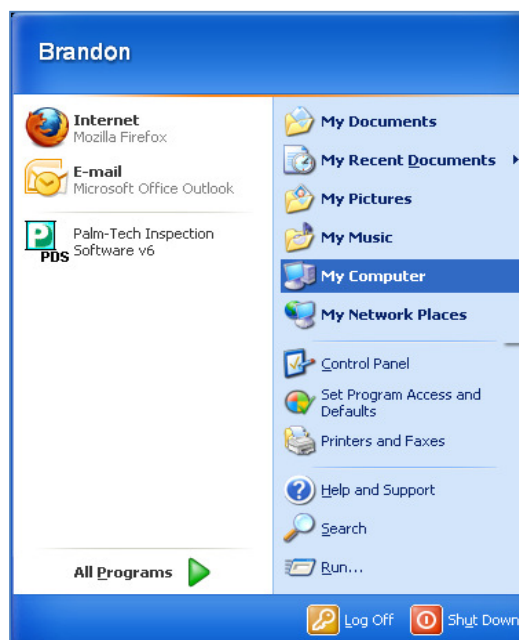


How to: Install Palm-Tech on a Tablet PC

- This window will show all of the files on your Palm-Tech installation CD. Highlight **all** the files, then **right click** on any one of the highlighted files and select 'Copy'.

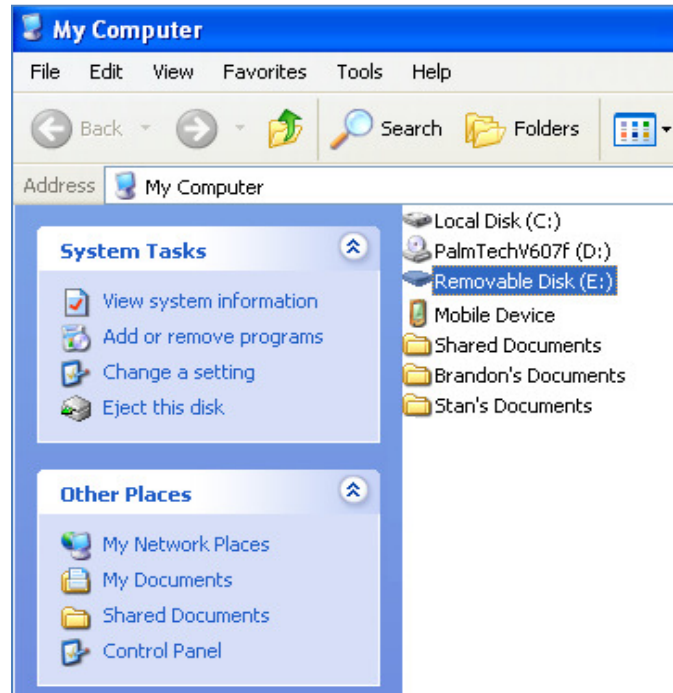


- Insert your flash drive if you have not done so already. Click on Start and again select 'My Computer'.

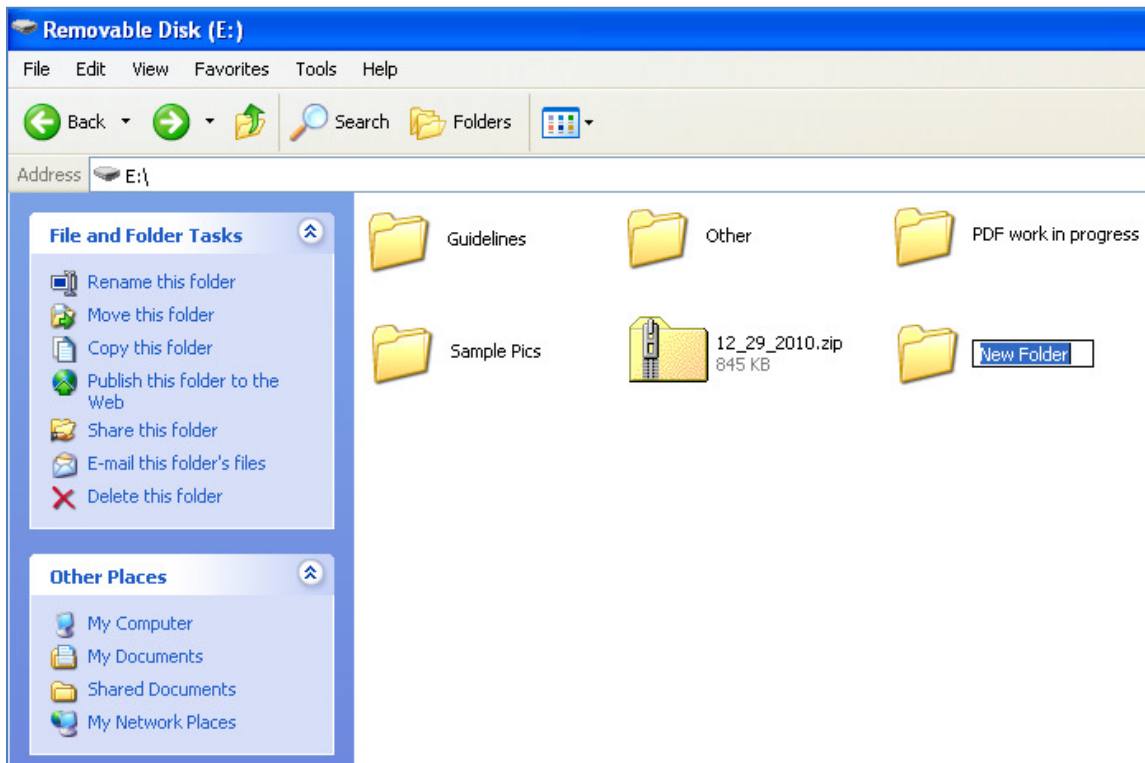


How to: Install Palm-Tech on a Tablet PC

5. Open up your Flash Drive (it may be named something other than 'Removable Disk' depending on your computer and flash drive).

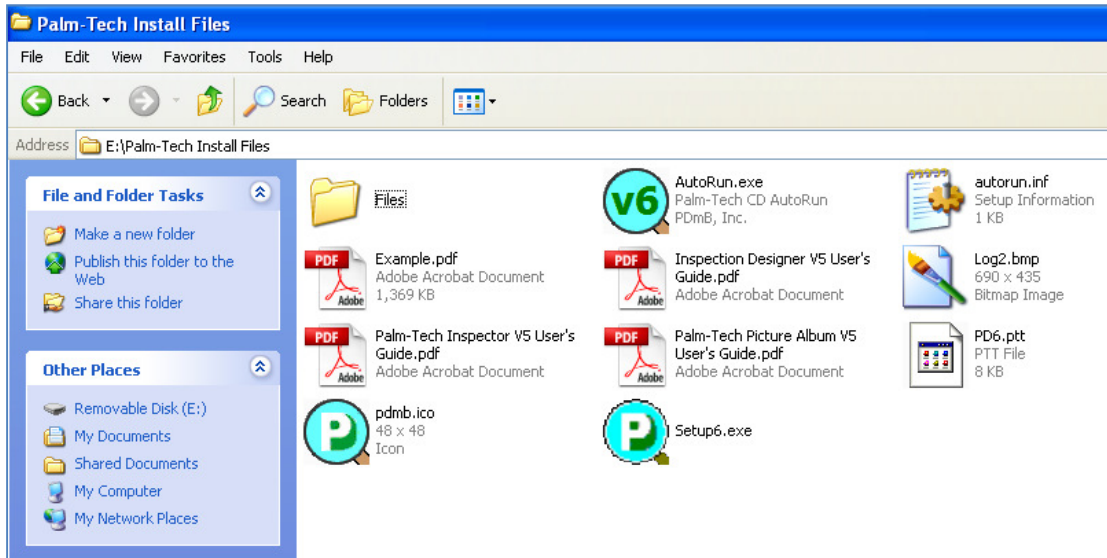


6. Create a new folder on your Flash Drive for all of your Palm-Tech Installation files. Right click anywhere on the screen and click New > Folder.

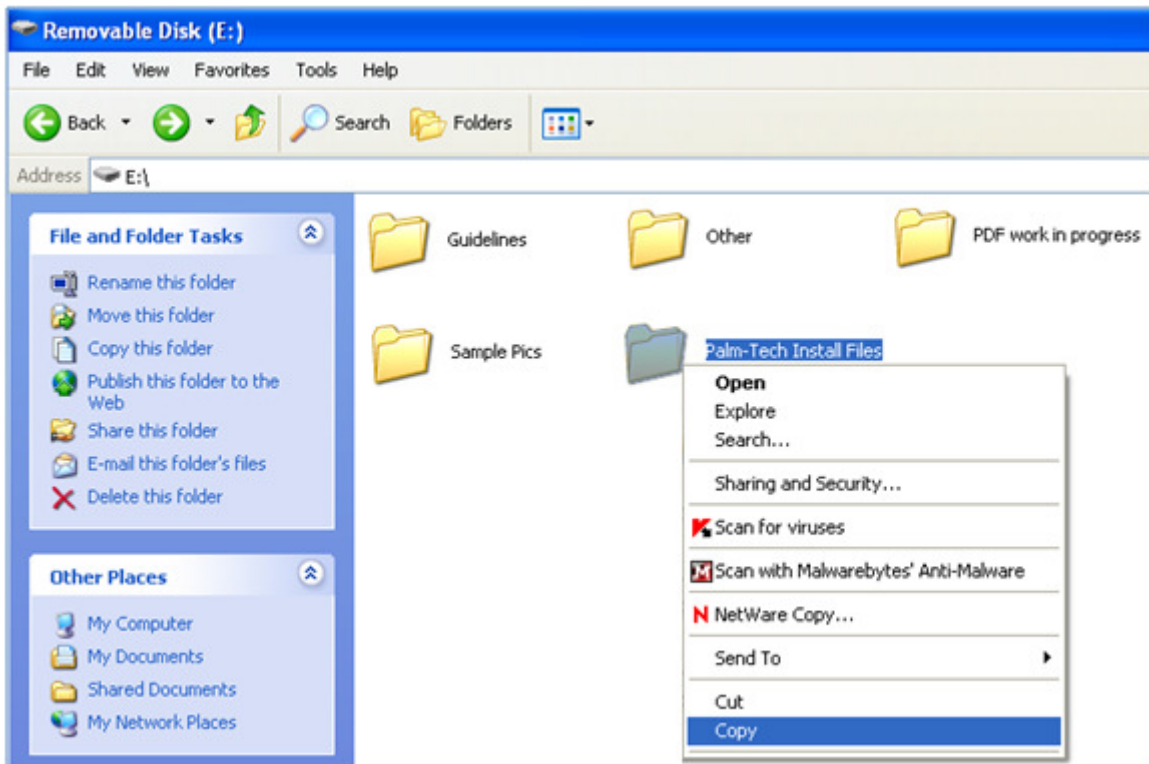


How to: Install Palm-Tech on a Tablet PC

7. You can name the folder whatever you want. After naming the folder, open it up and right click and select 'Paste'. All of your copied Palm-Tech installation files will now be in the newly created folder.

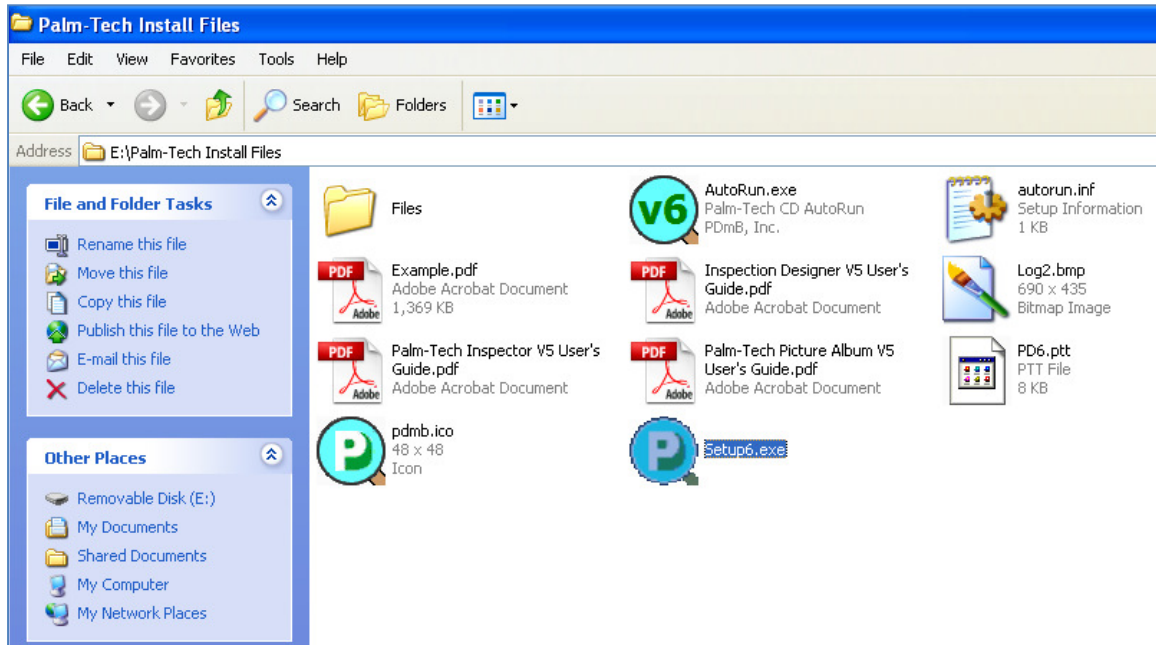


8. Next, remove your flash drive and insert it into your tablet PC. Go to Start > Computer and open up your flash drive. Right click on the new folder you created and click copy.



How to: Install Palm-Tech on a Tablet PC

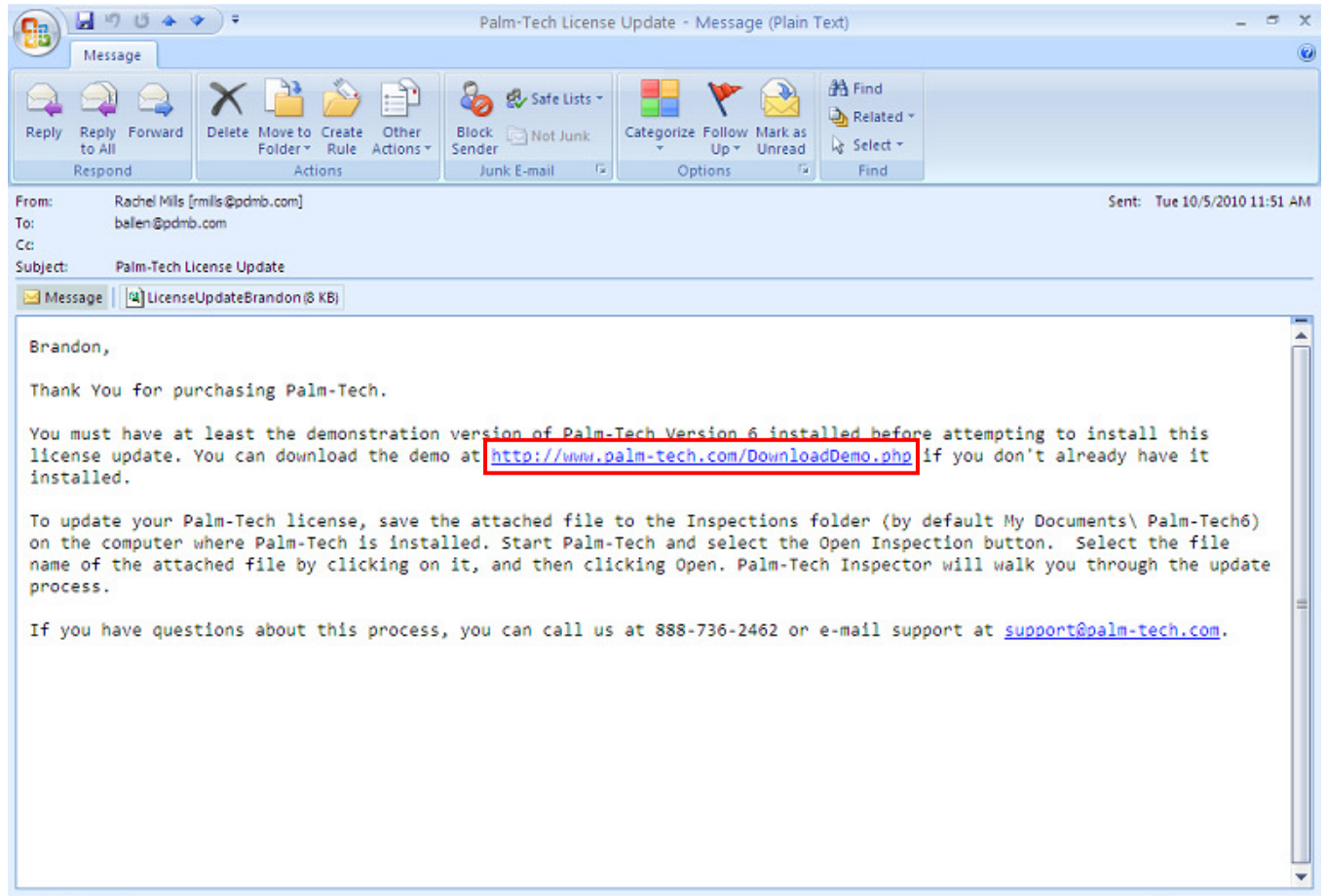
9. Paste the folder to your desktop, or somewhere else you can easily access. Open up the folder and double click 'Setup 6.exe' to start the install.



How to: Install Palm-Tech on a Tablet PC

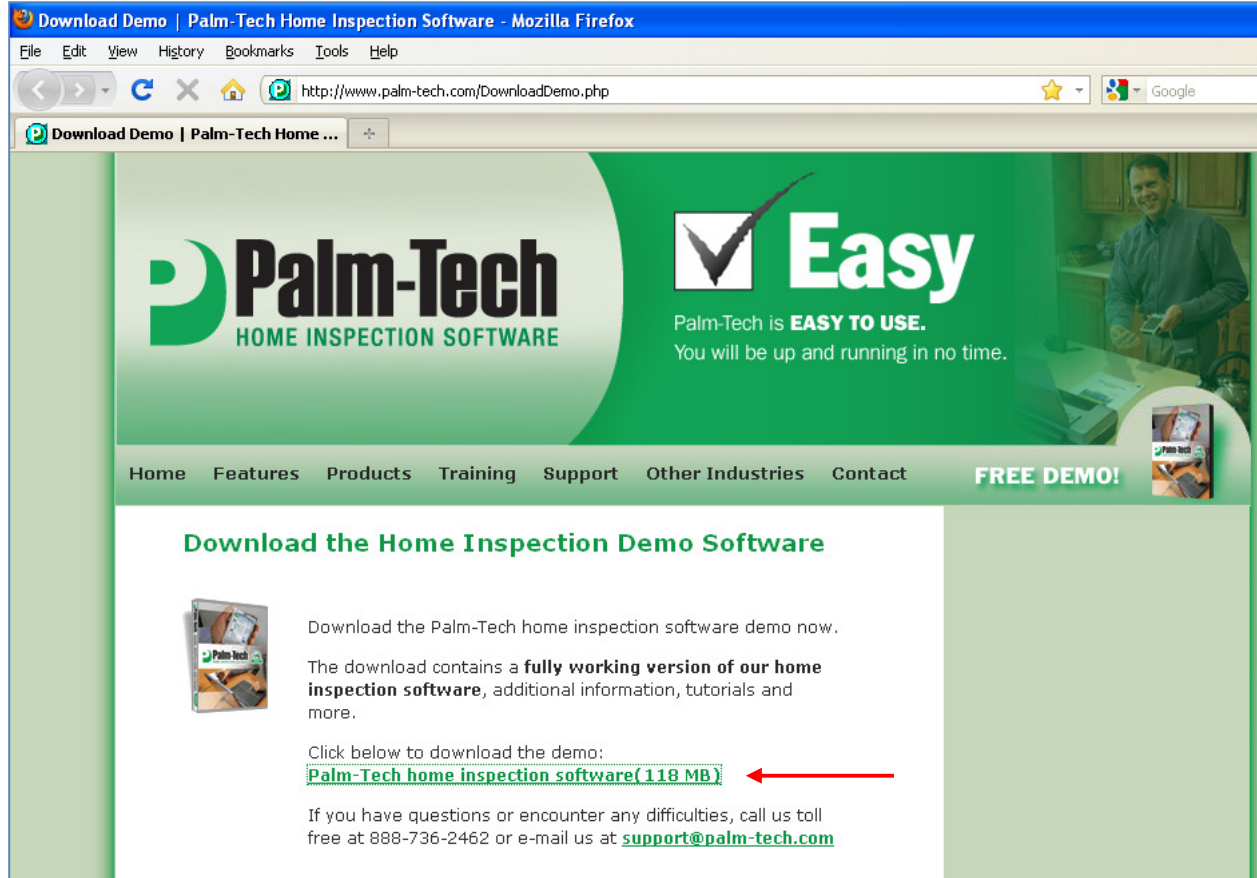
Copying the Download from your Email to a Flash Drive

1. Open the email you received from Palm-Tech, click the link provided to download the demonstration version of the software.

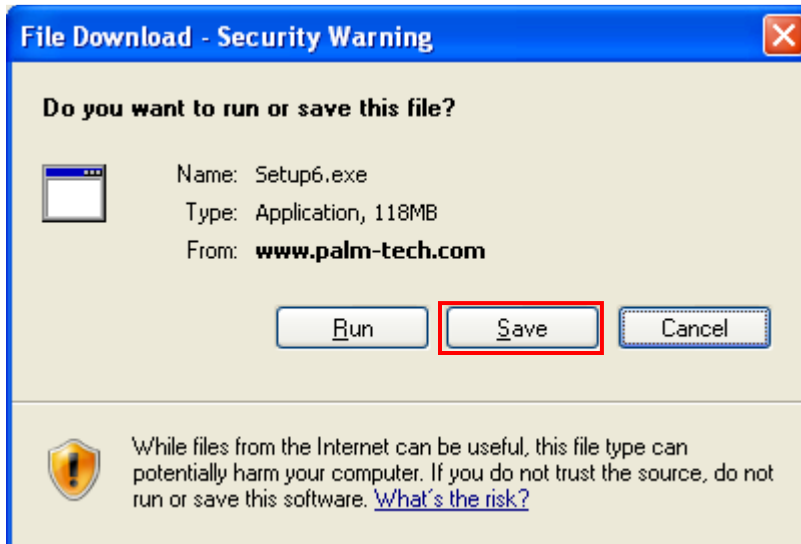


How to: Install Palm-Tech on a Tablet PC

2. Follow the link to the Palm-Tech website where you will need to click on the download link.

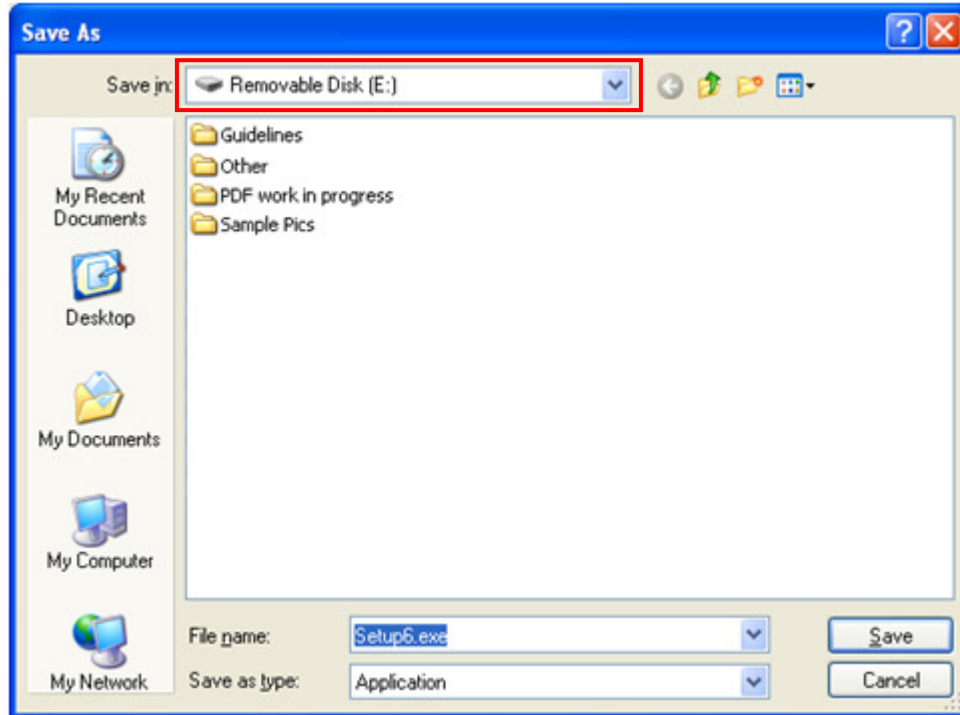


3. Download the file by clicking Save.

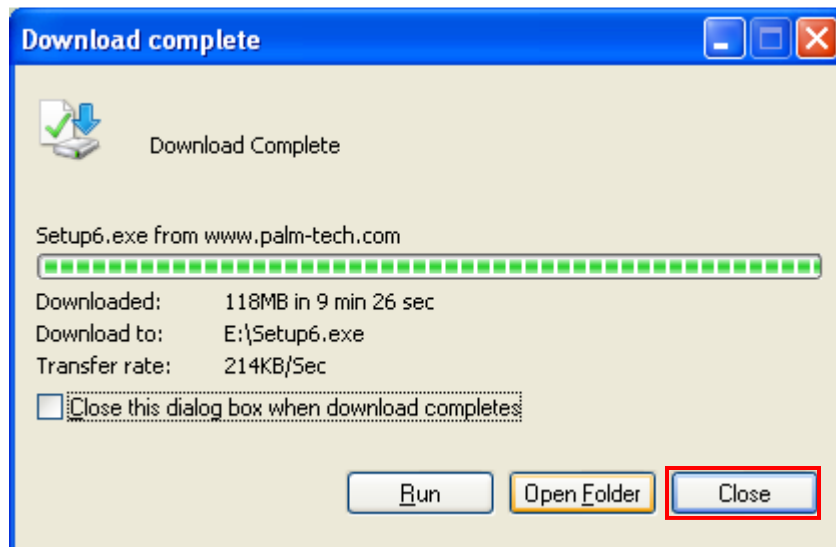


How to: Install Palm-Tech on a Tablet PC

- The 'Save As' box will appear, save the download to your flash drive (make sure your flash drive is inserted into your computer).

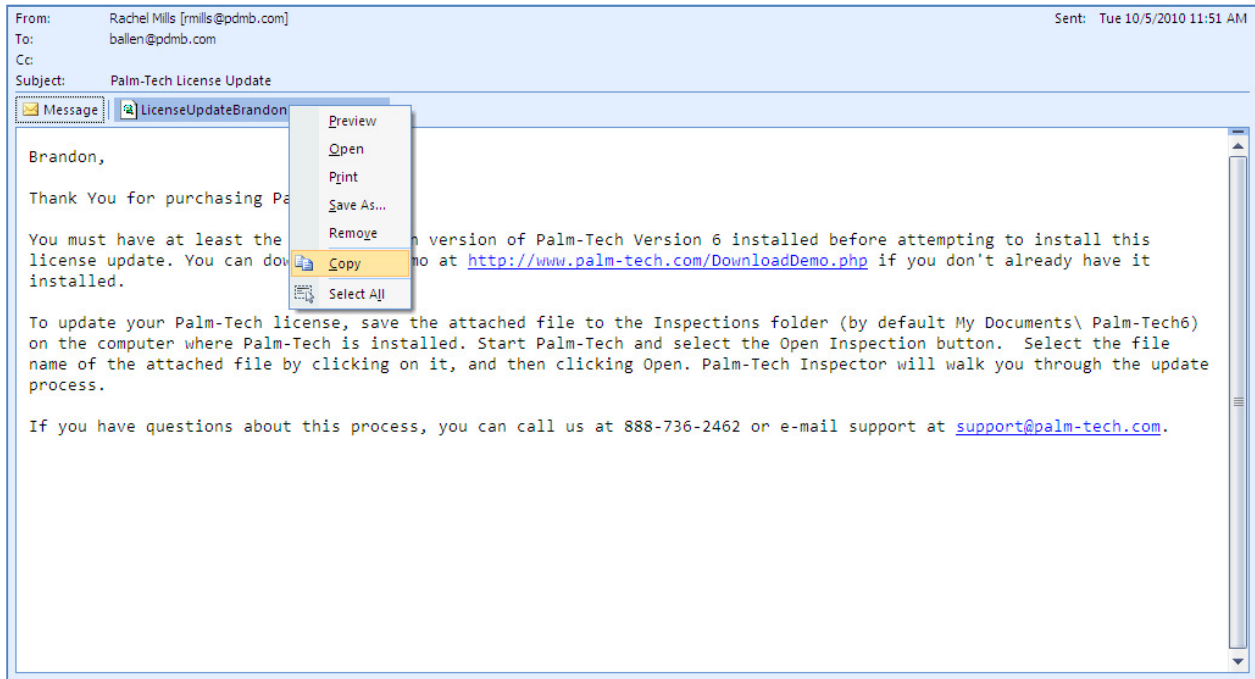


- When Palm-Tech is finished downloading, close the download box.

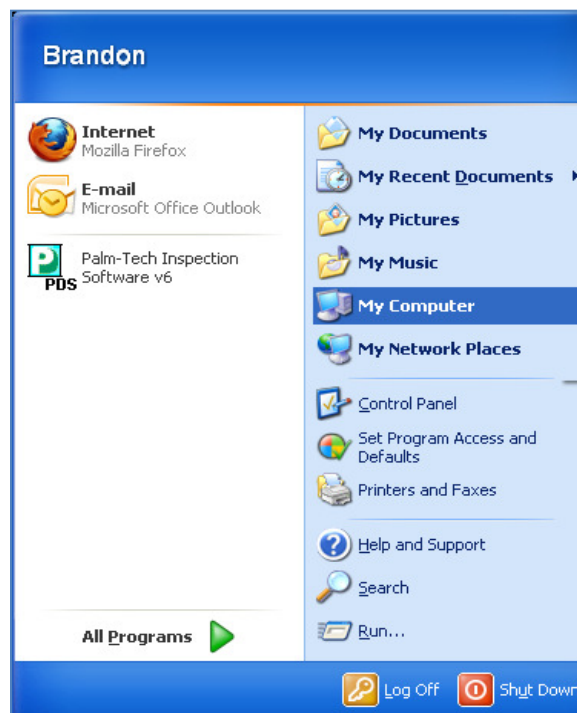


How to: Install Palm-Tech on a Tablet PC

- Now that you have the Palm-Tech download saved to your flash drive, you will need to save your license update to your flash drive as well. Return to the email you received from Palm-Tech. Right click on the attached license update and click 'Copy'.

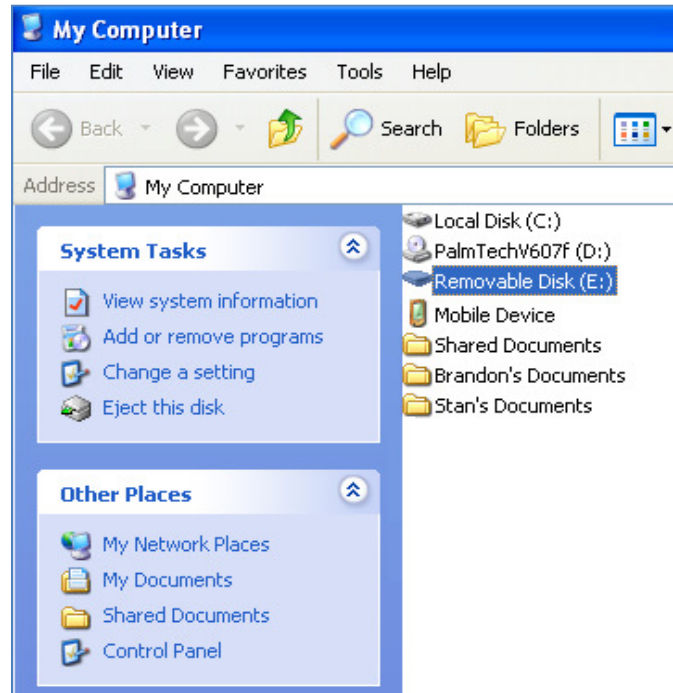


- Go to Start > My Computer.

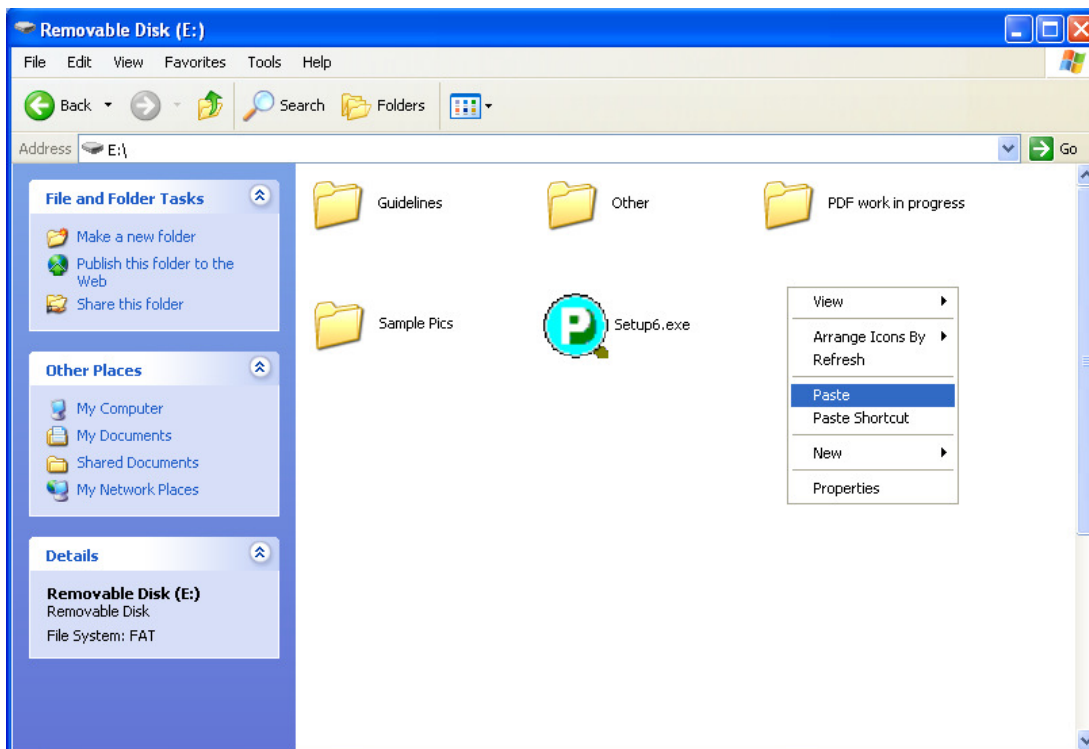


How to: Install Palm-Tech on a Tablet PC

- Open up your Flash Drive (it may be named something other than 'Removable Disk' depending on your computer and flash drive).

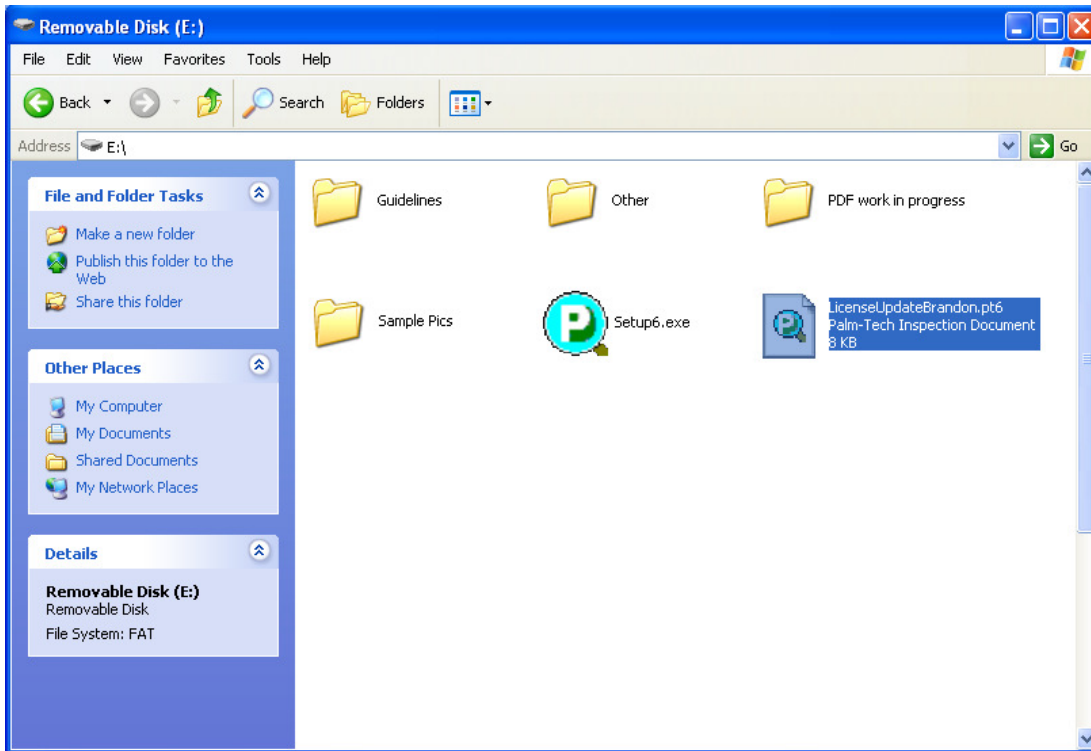


- Right click in a blank area and click 'Paste' to paste your license update onto your flash drive.

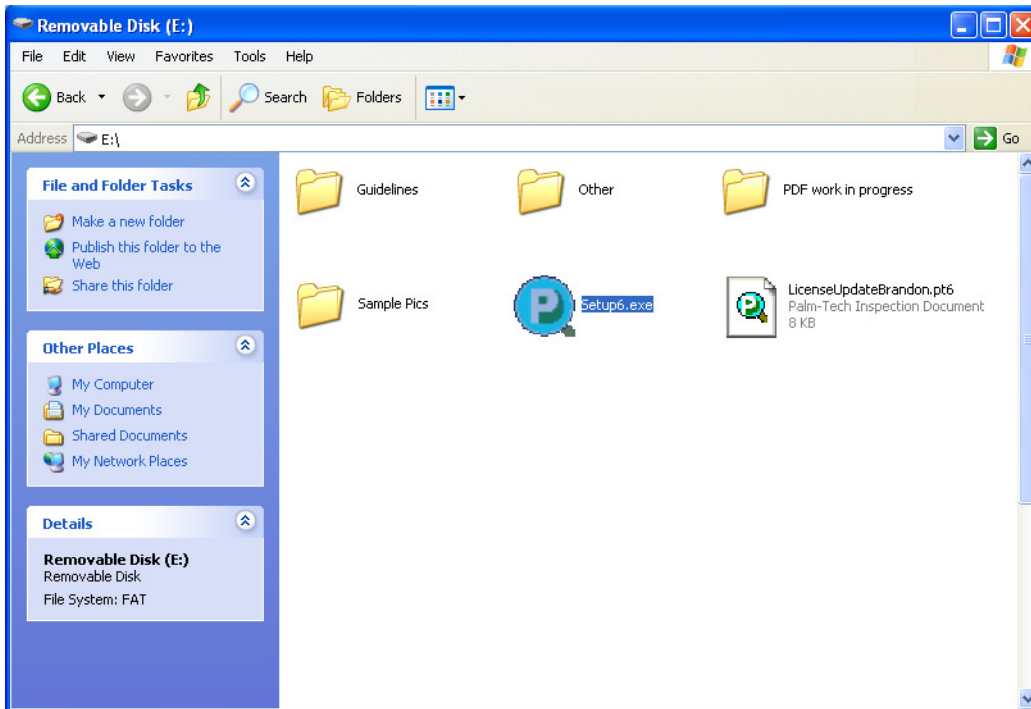


How to: Install Palm-Tech on a Tablet PC

- Now with your Palm-Tech download and your license update on your flash drive, you are ready to insert the flash drive into your tablet pc.



- With your flash drive in your tablet, go to My Computer and open your flash drive. Double click on the 'Setup6.exe' file. This will start your install.

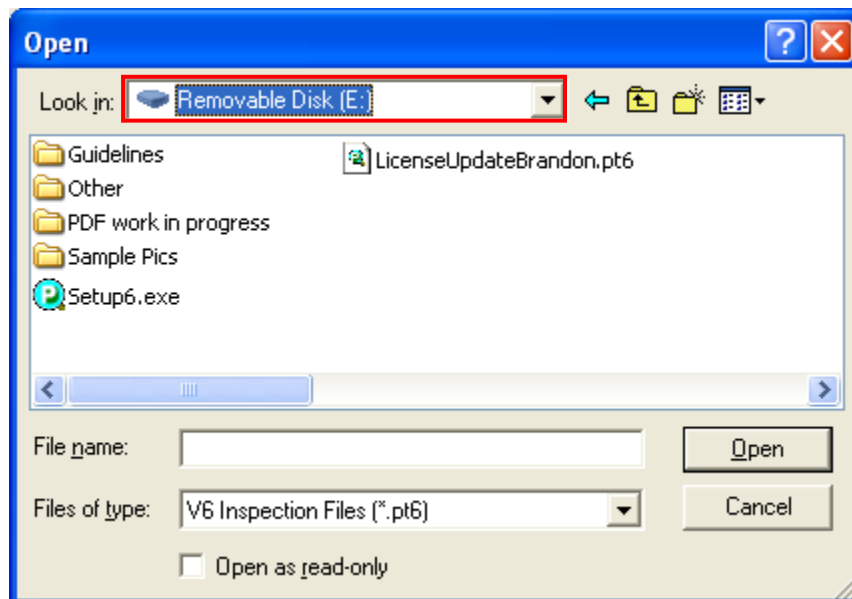


How to: Install Palm-Tech on a Tablet PC

- Once Palm-Tech is installed, you will need to run your license update. Open up Palm-Tech and click on 'Open an Existing Inspection'



- An Open box will pop up. In the 'Look in' dropdown, you will want to select your flash drive.



How to: Install Palm-Tech on a Tablet PC

12. Select your license update and click 'Open'. Palm-Tech will run through the User Agreement. When your license update is finished, close and reopen Palm-Tech.

