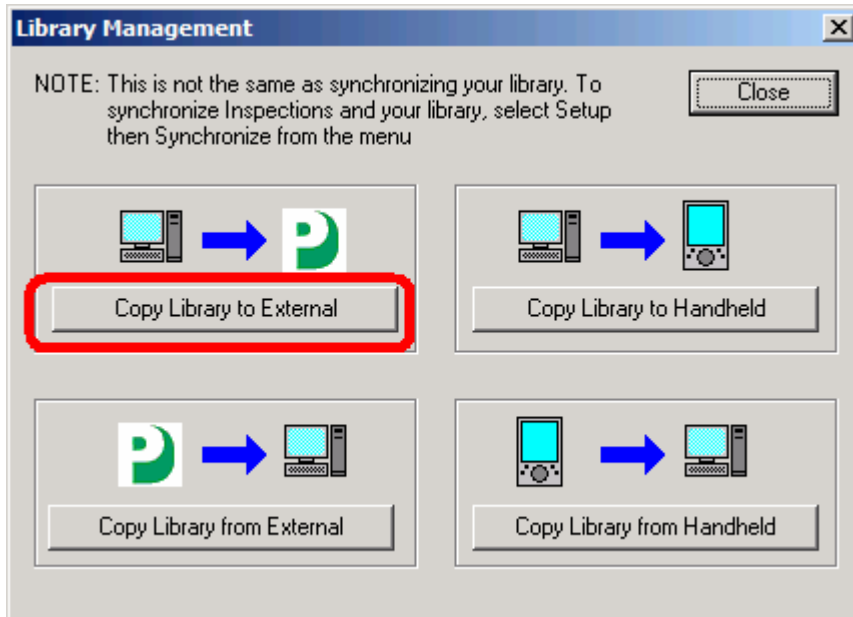
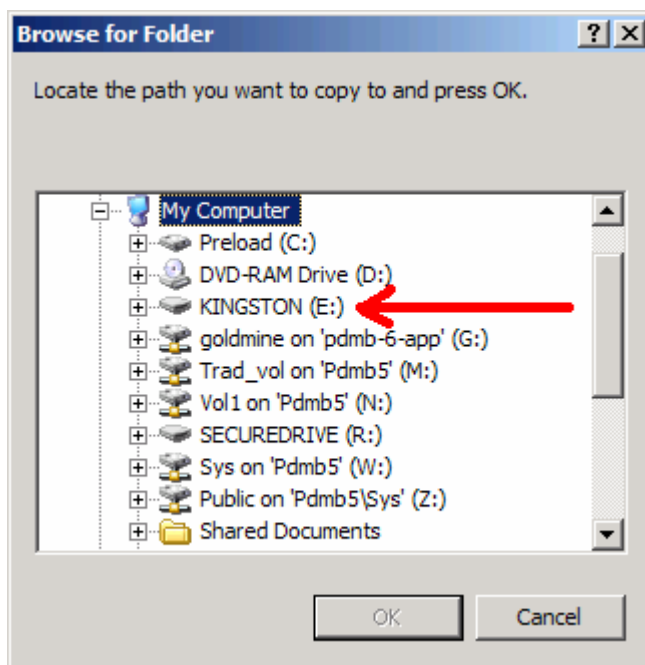


Transferring Libraries from one computer to another

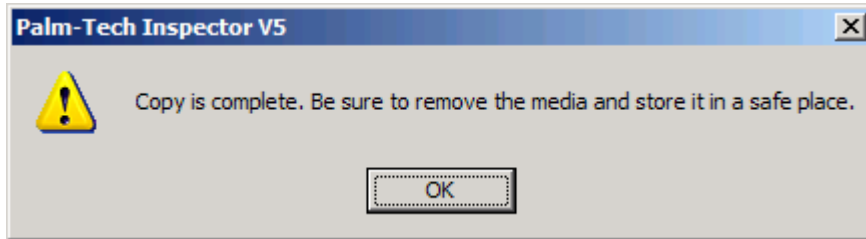
1. On the source PC, insert the external drive, open Inspector and select **Setup -> Library Management** from the menu.
2. Click **“Copy Library to External”**



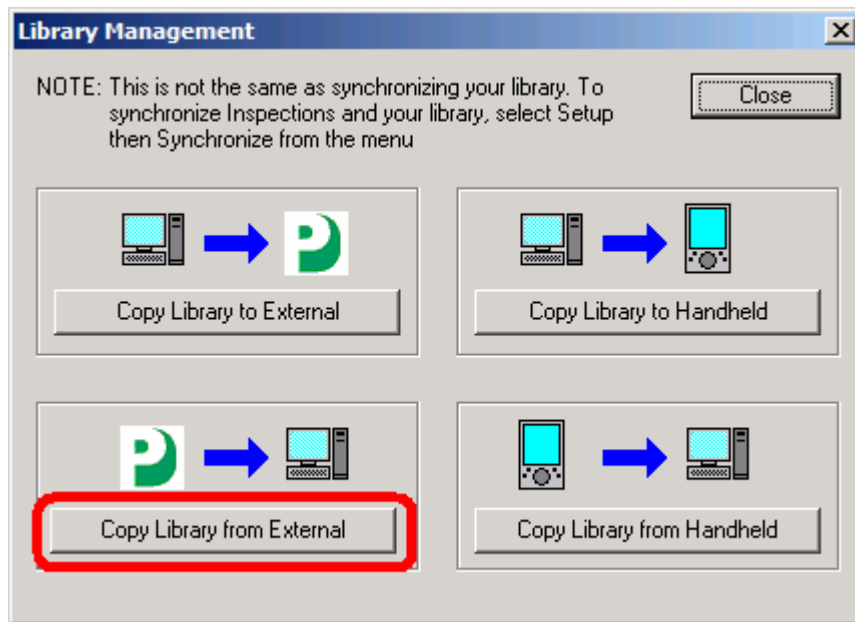
3. Select your external device from the list (In the example below, it is drive E:)



- Click OK and wait for the copy to finish.

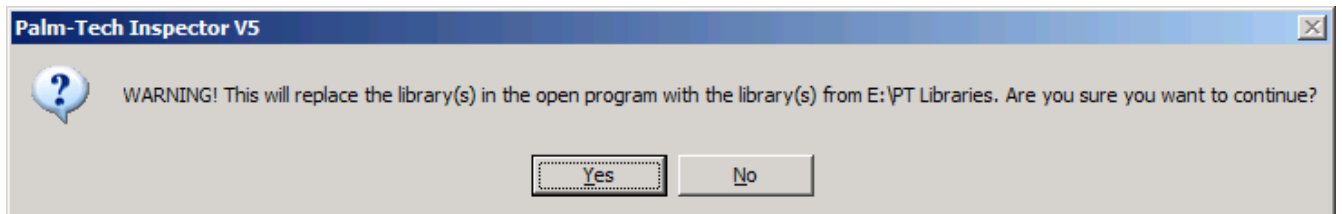


- Remove the external device and insert into the destination PC
- On the destination PC, insert the external drive, open Inspector and select **Setup -> Library Management** from the menu.
- Choose **“Copy Library from external”**



- Select your external device from the list and click OK.

NOTE: You will be warned that the library on the External drive will replace the libraries currently on the PC, you will need to answer 'Y'es for the copy to occur.



- You will be notified when the copy has completed.
- Close Inspector and the new libraries will be available the next time you start the program.

NOTE: Vista users : Make sure you are running the program as administrator. To run as administrator refer to page 2

Right-click the Palm-Tech icon on your desktop and click **Properties**.

1. On the Properties Window, click on the **Compatibility** tab.
2. Under Privilege Section, select '**Run this program as an administrator**'
3. Click **OK**.

