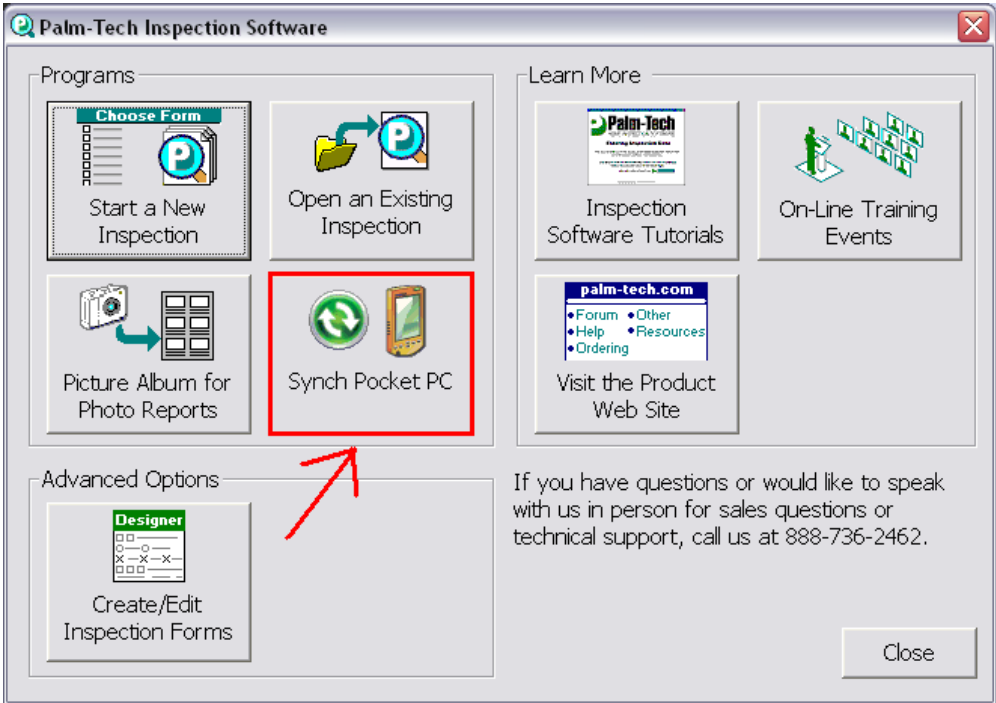


This step-by-step document will take you through the entire process of transferring your reports between your desktop or laptop computer and your Pocket PC. There are 2 ways to send reports over to your handheld, and this guide will go over both of them.

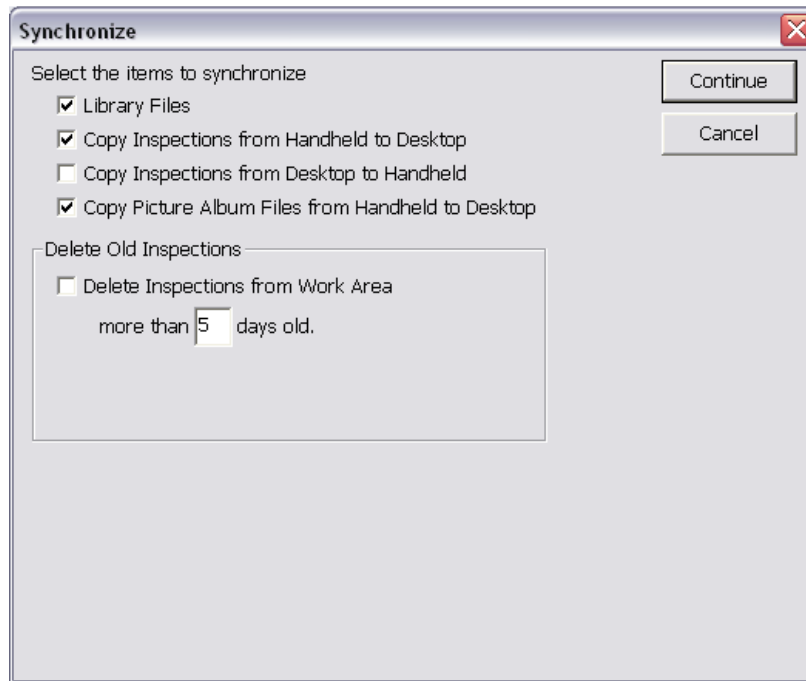
I. Full Synchronization

1. Connect your Pocket PC to your desktop or laptop PC and give it time to connect.
2. Open your Palm-Tech 6 Inspection Software and click on the "Synch Pocket PC" button.



How To: Synchronize Reports with your Pocket PC

3. This will bring up the synchronize window. This is where you will tell the program exactly what you want it to synchronize when you perform this action.

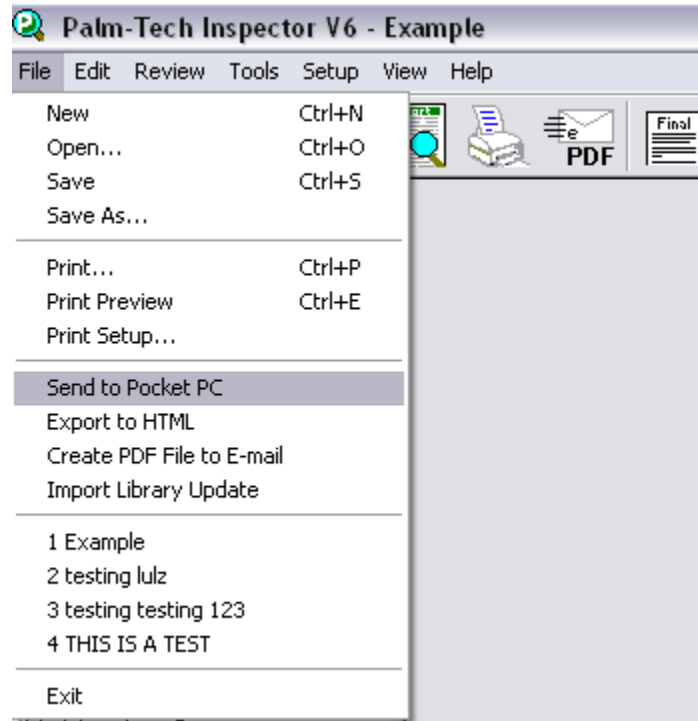


4. You will see a window with 2 progress bars next. When they are finished you will see a window that says "Synchronization is complete". Click on ok. You are now finished synchronizing your files.

How To: Synchronize Reports with your Pocket PC

II. Sending over individual inspections

1. Open Palm-Tech and go to open the inspection you wish to send to your Pocket PC.
2. Click on "File" and select "Send to Pocket PC".



3. You will see a window with a progress bar come up. When it is finished a window will pop up that says "The inspection was successfully sent to your Pocket PC". Click on Ok and you are now finished.