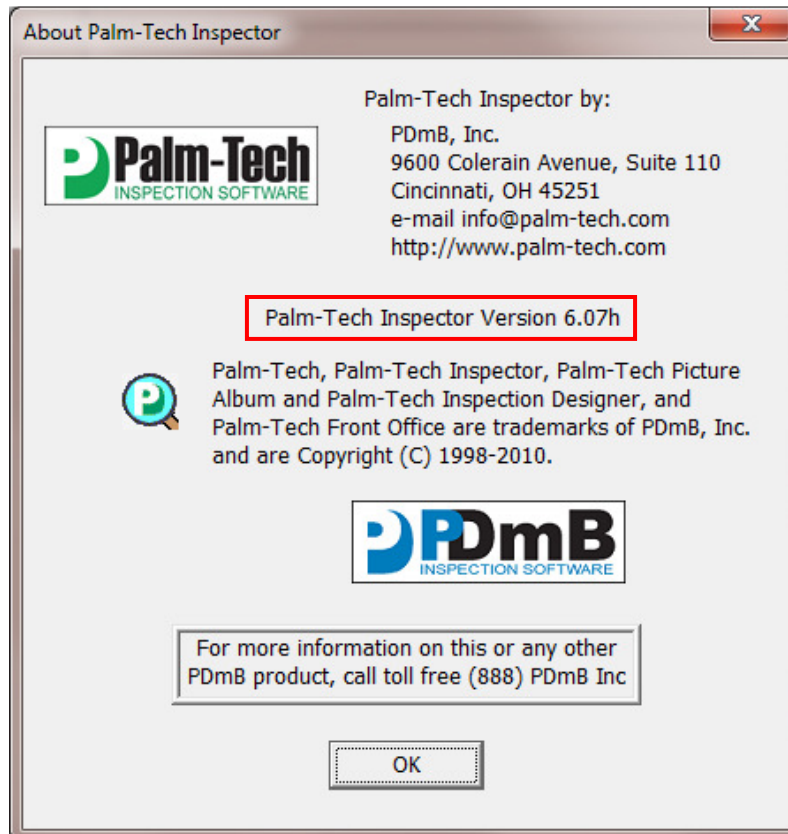


Whether you are on version 5 or 6, you will want to be on the latest update available for the version. This makes sure that you have all of the latest features and fixes for the software. This How To will explain how to install the latest update for Palm-Tech.

Updating to the Latest Version of Palm-Tech

1. If you are unsure what version of Palm-Tech you are running, you can easily check by opening an inspection in Palm-Tech and clicking on Help > About Inspector.



How to: Install the Latest Update

2. The latest update for version 6 is currently 6.07h, however this will change. The last update for version 5 is 5.20c. If you are not on the latest update, click the link below to be taken to the Latest Update page of the Palm-Tech website - http://palm-tech.com/support/latest_update.php.

Palm-Tech
HOME INSPECTION SOFTWARE

Flexible
Palm-Tech is **FLEXIBLE**. No matter what kind of property you are inspecting, with Palm-Tech you'll have everything you need to deliver a complete report in the field.

Home Features Products Training Support Other Industries Contact **FREE DEMO!**

Latest Home Inspection Software Update

Latest Version 6 Update

- [Palm-Tech Home Inspection Software Version 6.07h Update](#) - 12/16/2010

Previous Version 6 Updates

- [Palm-Tech Home Inspection Software Version 6.06d Update](#) - 6/8/2010
- [Palm-Tech Home Inspection Software Version 6.06b Update](#) - 4/22/2010
- [Palm-Tech Home Inspection Software Version 6.05 Update](#) - 12/1/09

Previous Version 5 Updates

- [Palm-Tech Home Inspection Software Version 5.20c Update](#) - 8/26/09
- [Palm-Tech Home Inspection Software Version 5.19c Update](#) - 1/12/09
- [Palm-Tech Home Inspection Software Version 5.16h Update](#) - 4/1/08
- [Palm-Tech Home Inspection Software Version 5.16d Update](#) - 2/14/08
- [Palm-Tech Home Inspection Software Version 5.16 Update](#) - 11/29/07
- [Palm-Tech Home Inspection Software Version 5.15d Update](#) - 9/10/07
- [Palm-Tech Home Inspection Software Version 5.15c Update](#) - 5/12/07
- [Palm-Tech Home Inspection Software Version 5.15b Update](#) - 2/12/07
- [Palm-Tech Home Inspection Software Version 5.14b Update](#) - 10/16/06
- [Palm-Tech Home Inspection Software Version 5.13 Update](#) - 8/28/06
- [Palm-Tech Home Inspection Software Version 5.12 Update](#) - 7/29/06
- [Palm-Tech Home Inspection Software Version 5.11 Update](#) - 6/22/06
- [Palm-Tech Home Inspection Software Version 5.10 Update](#) - 5/26/06

Version 4 updates

- [Palm-Tech Home Inspection Software Version 4.16 Update](#) - 6/30/05

Latest version 3 update

- [Palm-Tech Home Inspection Software Version 3.11 Update](#) - 8/22/02

BUY IT NOW

"Thanks to Palm-Tech I spend less time at my desk and more time with my family."
Kevin Barry
Bonita Springs, FL

REQUEST A FREE DEMO

See for yourself how Palm-Tech can improve the efficiency of your home inspection process by requesting a free demo version of the program.

Find us on Facebook

Sign Up Create an account or log in to see what your friends like.

Palm-Tech Home Inspection Software

Like 142

Palm-Tech Home Inspection Software

3. The latest update for version 6 will be the top update in the list. To get on the latest version, you only need to run the latest update; you **do not need to run all of the updates between**. And if you are on version 5, you will only need to run the 5.20c update.

Latest Home Inspection Software Update

Latest Version 6 Update

- [Palm-Tech Home Inspection Software Version 6.07h Update](#) - 12/16/2010

Previous Version 6 Updates

- [Palm-Tech Home Inspection Software Version 6.06d Update](#) - 6/8/2010
- [Palm-Tech Home Inspection Software Version 6.06b Update](#) - 4/22/2010
- [Palm-Tech Home Inspection Software Version 6.05 Update](#) - 12/1/09

Previous Version 5 Updates

- [Palm-Tech Home Inspection Software Version 5.20c Update](#) - 8/26/09
- [Palm-Tech Home Inspection Software Version 5.19c Update](#) - 1/12/09
- [Palm-Tech Home Inspection Software Version 5.16h Update](#) - 4/1/08

How to: Install the Latest Update

4. Click on the update that you need and then click on the .exe that appears on the next screen.

Palm-Tech 6.07h Update

You must already be running Version 6.0 or higher of Palm-Tech. Make sure that your Pocket PC is connected to your desktop PC before beginning the installation.

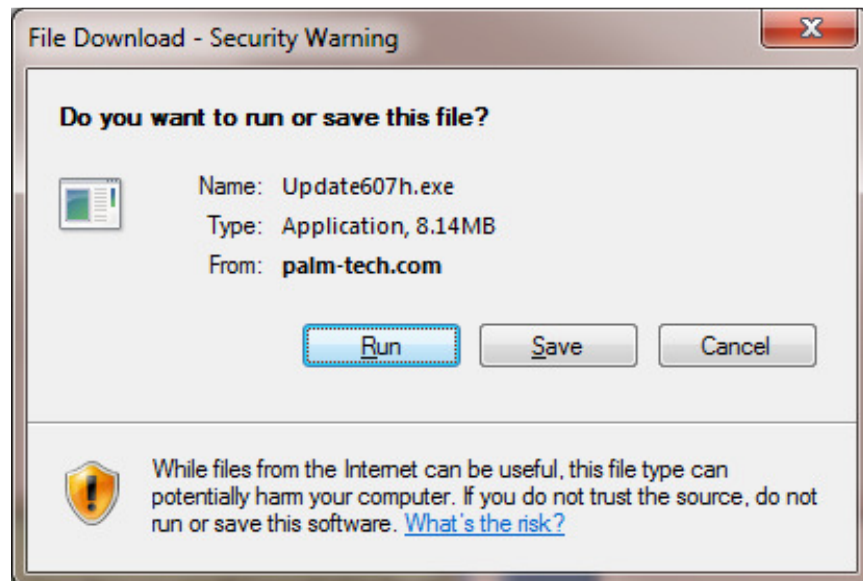
Download the file below and run it.

To run the file, open Windows Explorer and locate the downloaded file. Either double click the file or select it by single clicking the file and press the 'Enter' key.

[Update607h.exe](#) (8.14 MB) Last Updated 12/16/2010

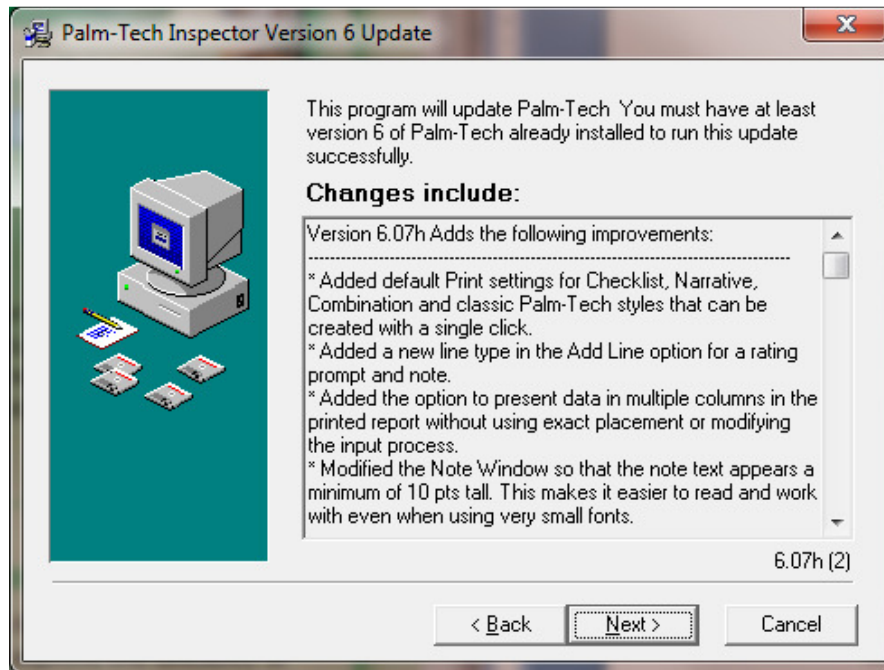
NOTE: There is no default directory for downloading. Be sure to note the path where you are downloading the file.

5. A File Download box will appear; we are going to click 'Run'. Depending on the internet browser you are using it may say 'Save File' or something slightly different.

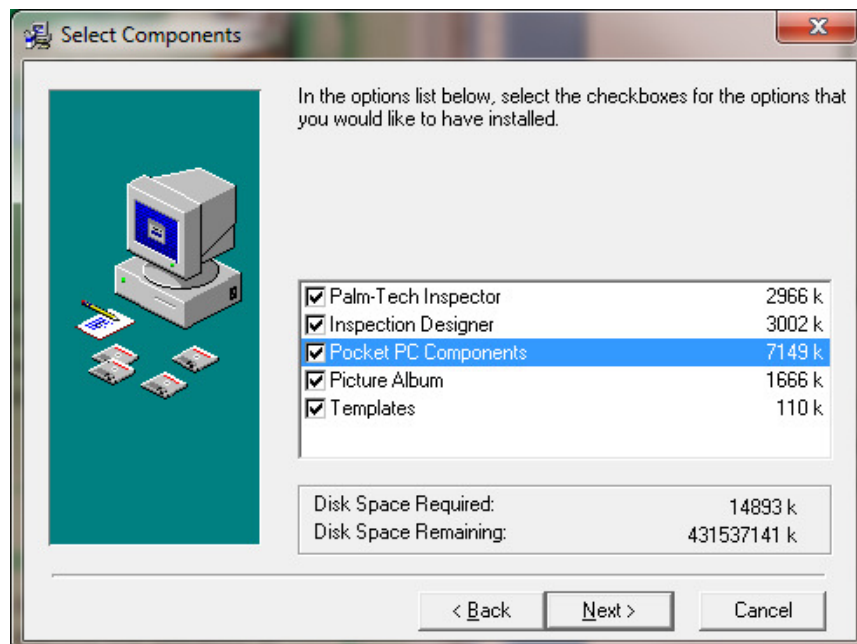


How to: Install the Latest Update

6. After your update is finished downloading, run it. It may run automatically by itself or you may need to tell it to run (double clicking on the download may do this). Multiple screens will pop up with information about the download, continue clicking Next after reading each screen.



7. If you use a handheld device, make sure it is connected so you can update Palm-Tech on it. If you do not use a handheld device, uncheck 'Pocket PC Components' on the screen below.



How to: Install the Latest Update

- Continue through the remaining screens and once the update is finished you will see the screen below.

